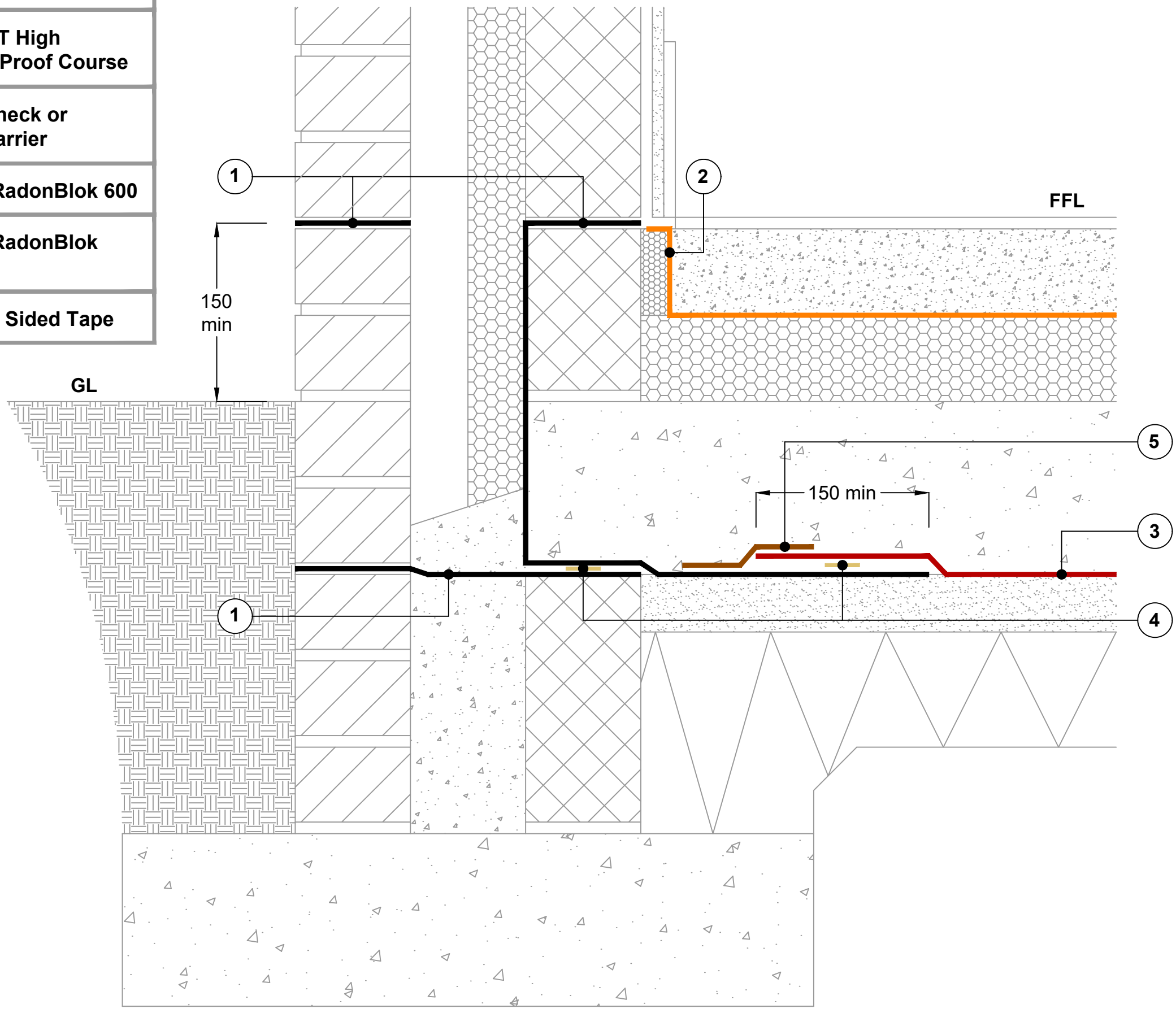


Key to materials:

1	Visqueen Zedex CPT High Performance Damp Proof Course
2	Visqueen Vapour Check or Visqueen Vapour Barrier
3	Visqueen Ultimate RadonBlok 600
4	Visqueen Ultimate RadonBlok Double Sided Tape
5	VisqueenPro Single Sided Tape



Section View

CRITICAL GUIDANCE NOTES

Visqueen Guidance Details are for illustration purposes only. It is the lead designer's responsibility to ensure Guidance Details are incorporated correctly into construction drawings.

Visqueen take no project design liability, or responsibility for the use of Guidance Details. Visqueen have no control over the situation in which the products are installed. Visqueen provide a Contract Design Service where project specific drawings can be produced. Contact Visqueen Technical Services for further information.

Site construction sequencing should be assessed before the appropriate Guidance Detail is selected and approved by the lead designer.

All Visqueen materials must be installed in strict accordance with the Visqueen Product Datasheets and applicable third party certificates.

DPCs and DPC cavity trays to be installed in accordance with BS 8215:1991, PD 6697:2019 and BS 8000-3:2020.

Visqueen air and vapour control layers (AVCLs) should be installed in accordance with the recommendations of BS 5250:2021.

Radon protection in accordance with national building regulations and BR211:2023.

In high radon risk locations e.g. full radon protection areas, a radon sump system will be required.

When reinforced concrete is laid over the membrane the reinforcements and spacers must be prevented from puncturing the membrane. Where there is potential risk for damage, the membrane should be covered with Visqueen TreadGuard protection or other approved protection material before positioning the reinforcement.

The Radon membrane system shown can be installed with welded lap joints. Contact Visqueen Technical Services for further information.

Drawing not to scale, use figured dimensions only. All figured dimensions are in millimetres.

Guidance Detail

Date: November 2023

Drawing No: URB600-42

Revision: A Drawn by: JR

Approved by: SD


 Tel: 0333 202 6800
 enquiries@visqueen.com
 www.visqueen.com

Copyright reserved. This drawing may not be reproduced or amended without prior written permission.

VISQUEEN

**ULTIMATE
RADONBLOK⁶⁰⁰**

**MEMBRANE BELOW SLAB
CAST IN SITU RC SUSPENDED SLAB AT
EXTERNAL MASONRY CAVITY WALL**